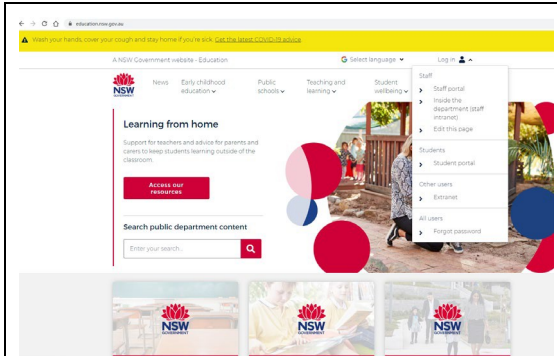
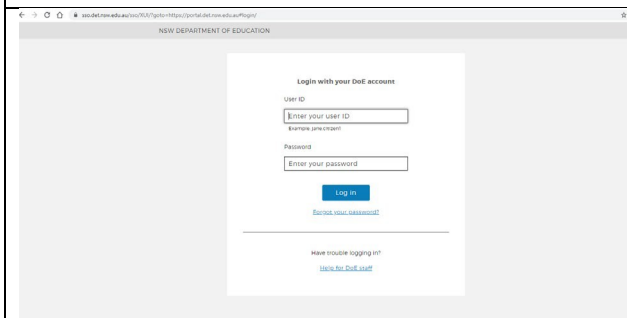




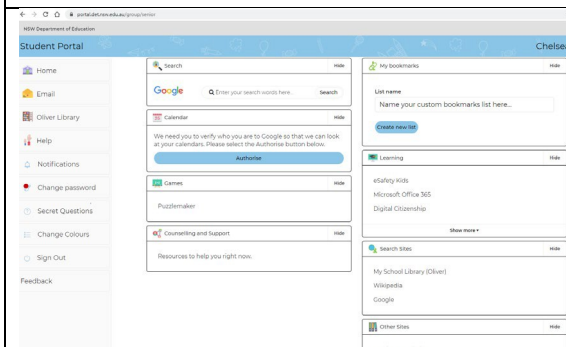
Guide on how to access Google Classroom



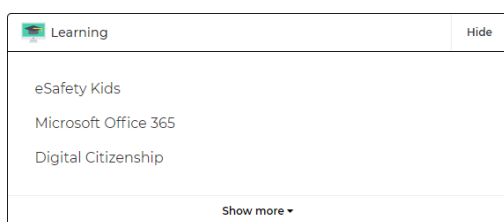
- Log onto your student portal by going to the following website
<https://education.nsw.gov.au/>
- Click the Log In and then click student portal



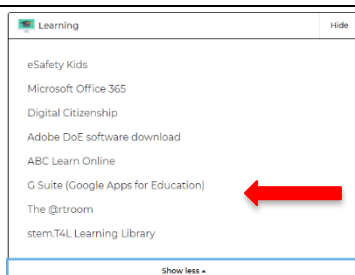
- Log in using your username and password
- If you cannot remember your username and password, please email the school at
warrawong-h.school@det.nsw.edu.au



- Once you have successfully logged in you will be taken to your student portal page

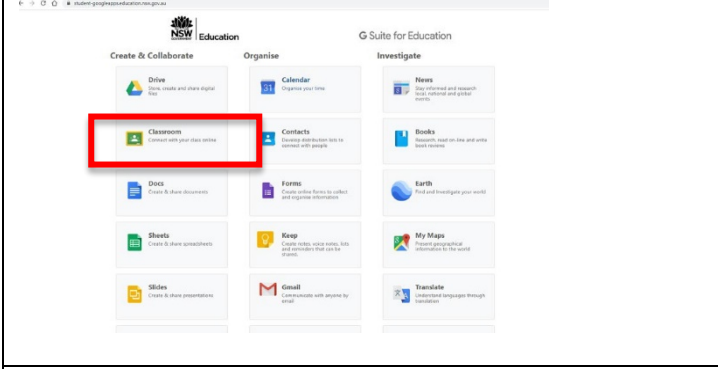
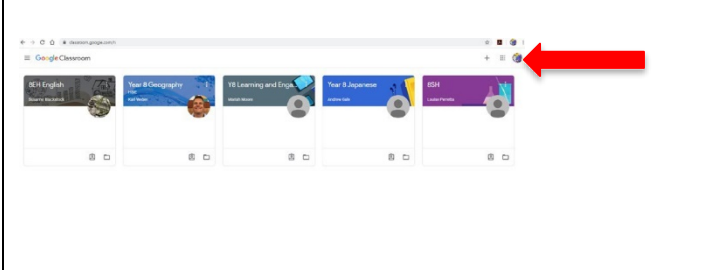
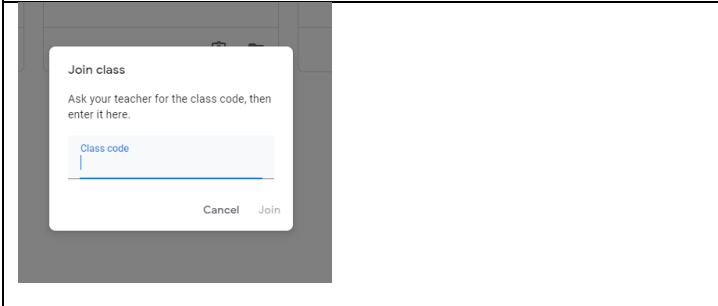


- Find the Learning tab on the right hand side of your screen and click on the show more tab



- Click on G Suite (Google Apps for Education)



| | |
|--|---|
|  | <ul style="list-style-type: none">• Click on Classroom |
|  | <ul style="list-style-type: none">• To join a classroom, click on the + icon on the top right hand corner of the screen |
|  | <ul style="list-style-type: none">• Enter the code for the class your work like to join• Once you join the class, you will now be able to access work, submit your work and seek help from your teacher(s) |